

# Rosanae

Vitales (Vitaceae)

Zygophyllales (Zygophyllaceae)

Celasterales (Celasteraceae, Parnassiaceae)

Oxalidales (Oxalidaceae)

Malphigiales (Euphorbiaceae, Hypericaceae, Salicaceae, Violaceae)

Fabales (Fabaceae)

Rosales (Moraceae, Rhamnaceae, Rosaceae, Cannabaceae, Ulmaceae, Urticaceae)

Cucurbitales (Cucurbitaceae)

Fagales (Fagaceae, Juglandaceae, Betulaceae)

Geraniales (Geraniaceae)

Myrtales (Lythraceae, Punicaceae, Trapaceae, Myrtaceae, Onagraceae)

Sapindales (Anacardiaceae, Meliaceae, Rutaceae, Aceraceae, Hyppocastanaceae, Simaroubaceae)

Malvales (Cistaceae, Malvaceae, Tiliaceae, Thymelaeaceae)

Brassicales (Brassicaceae, Capparidaceae, Resedaceae)

Fabide, Roside I

Malvide, Roside II

# Vitaceae



# Zygophyllaceae

\*K<sub>5</sub> C<sub>5</sub> A<sub>(5+5)</sub> G<sub>(5)</sub>



# Celasteraceae



# Parnassiaceae

\*K(5) C5 A5+5st G (3)



*Parnassia palustris*



Žlijezdasto dlakave staminodije

# Oxalidaceae

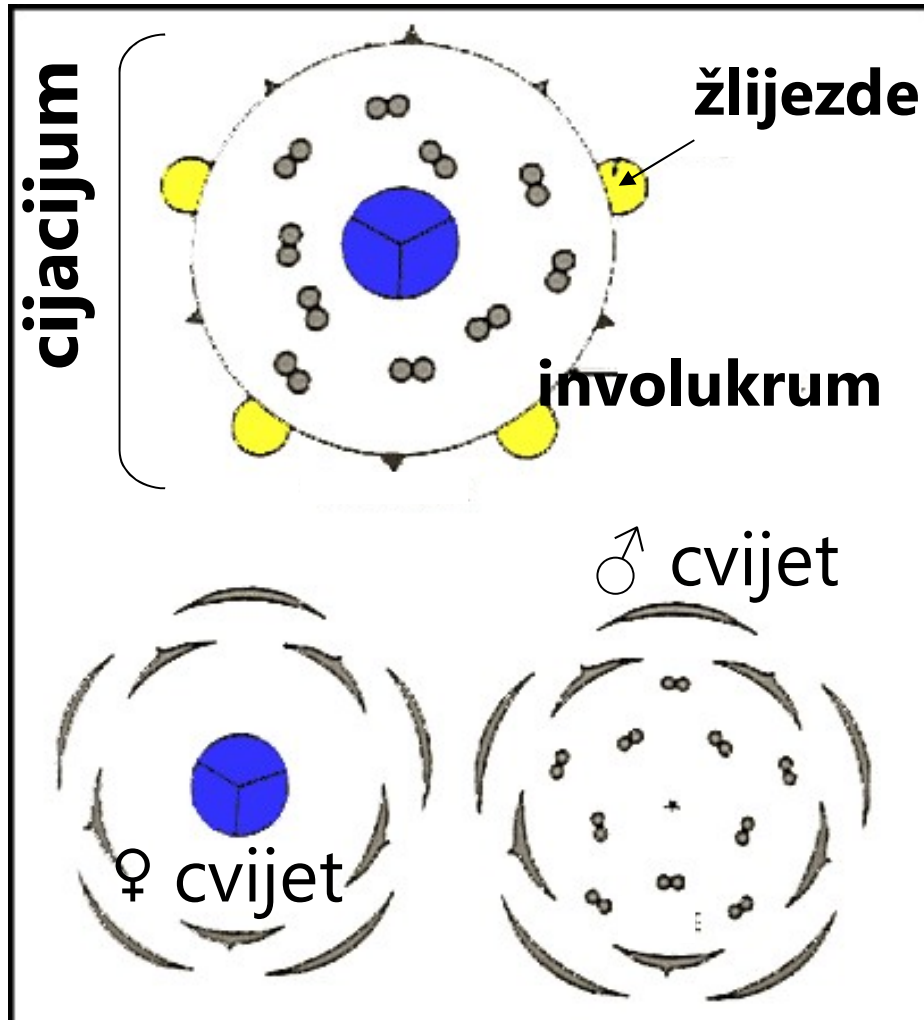


*Oxalis acetosella*

10 prašnika, pri dnu srasli, 5 vratova

\*K5 C5 A(5+5) G(5)

# Euphorbiaceae



\*K<sub>5</sub> C<sub>5</sub> A<sub>5+3</sub> G<sub>0</sub>; \*K<sub>5</sub> C<sub>5</sub> A<sub>0</sub> G<sub>(3)</sub>



# *Mercurialis perennis*

♂ jedinka



♀  
jedinka







\*P5 A $\infty$ ;  
\*P3 G (3)

*Ricinus communis*

Granati  
prašnici



# g. Euphorbia

Ko Co A1 G0  
Ko Co A0 G(3)

Tipovi žlijezda:

1. Ovalne
2. Plumjesečaste

Ovalne žlijezde

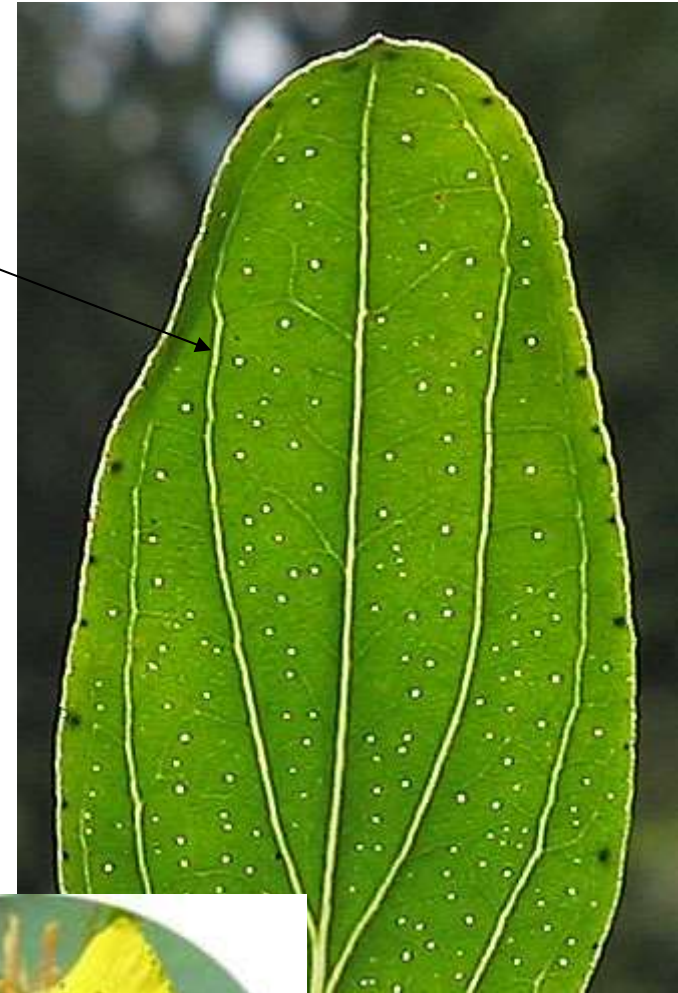


Plumjesečaste žlijezde



# Hypericaceae

"perforirani"  
listovi



*Hypericum perforatum*

Niz crnih žlijezda  
na rubu latice

Još neki taksonomski markeri roda ... ili vrsta

Plodnica sa više vratova



Prašnici u snopićima



*H. barbatum*- čašica sa resama

# Salicaceae



A2-4  
G(2)



*Salix* sp.



A photograph of a Salix alba (Weeping Willow) branch with long, slender, green leaves. The leaves are arranged in a dense, drooping cluster. The background is a soft-focus green.

*Salix alba*

A close-up photograph of Salix retusa (Narrow-leaved Willow) showing small, green, lanceolate leaves and several upright, cylindrical catkins with numerous yellowish stamens. The plant is growing on a bed of small, grey pebbles.

*Salix retusa*

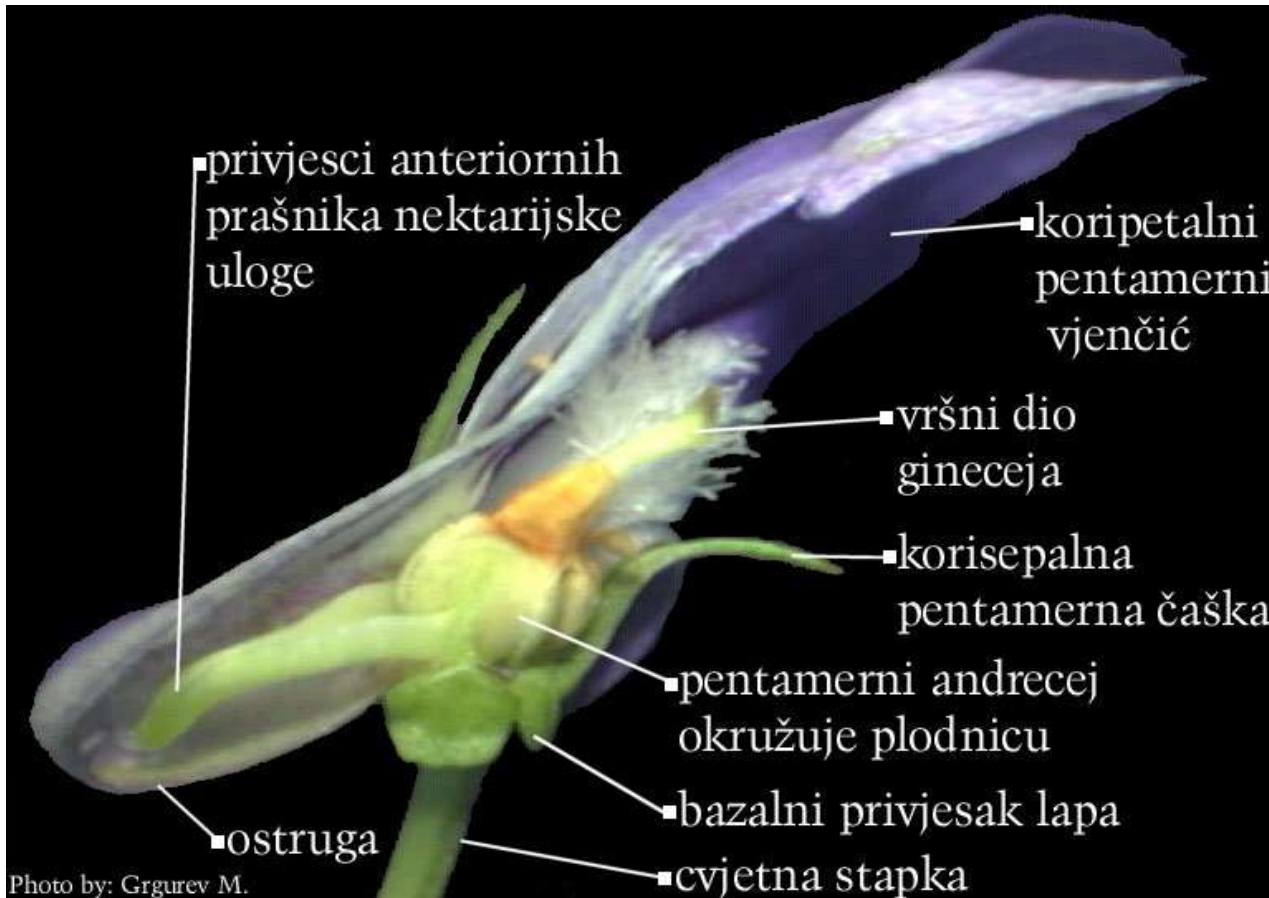
A close-up photograph of Salix herbacea (Cushion Willow) showing small, rounded, green leaves with a slightly waxy texture and reddish-brown catkins. The plant is growing in a mossy, damp environment.

*Salix herbacea*

# Violaceae



*Viola* sp.- ljubičica







*V. odorata*

*V. biflora*

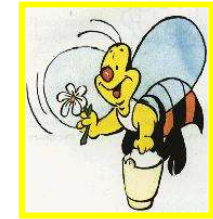
raspored latica  
4+1

raspored latica  
2+3



*V. tricolor*- dan-noć

# Fabaceae



Mimosoideae

Caesalpinioideae

Papilionoideae



Acacia dealbata- mimoza



Cercis siliquastrum  
Judino drvo



kauliflorija

# Caesalpinoideae

*Gleditsia triacanthos*

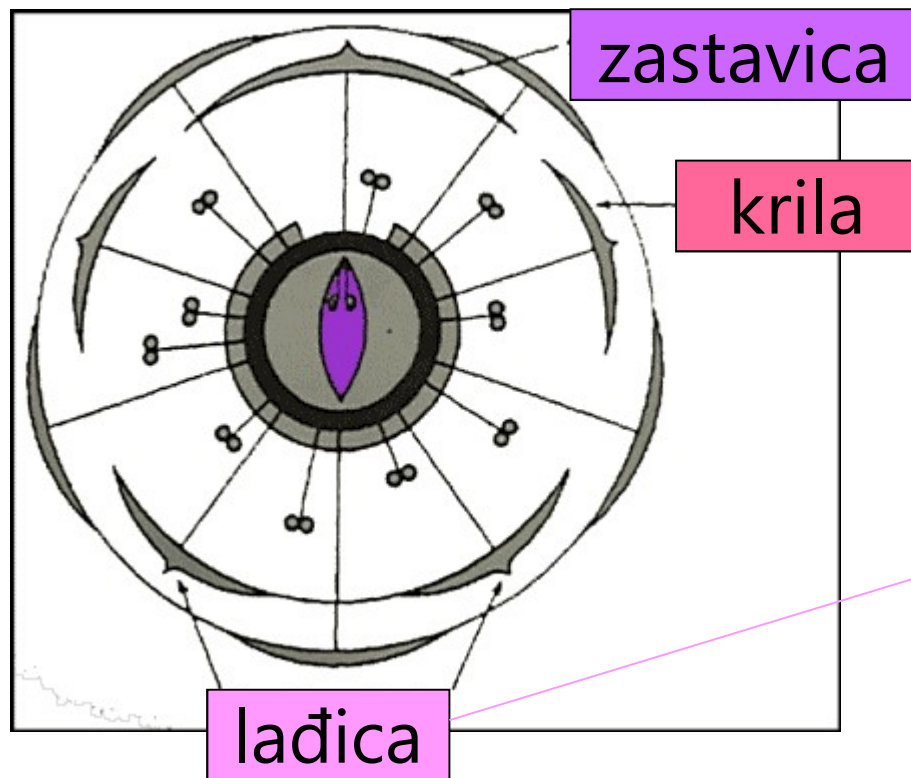
*Ceratonia siliqua*- rogač

Cvjetovi jednopolni



# Papilionoideae

K(5) C5 A(10) ili (9)+1 G(1)



vitice ili rašljike

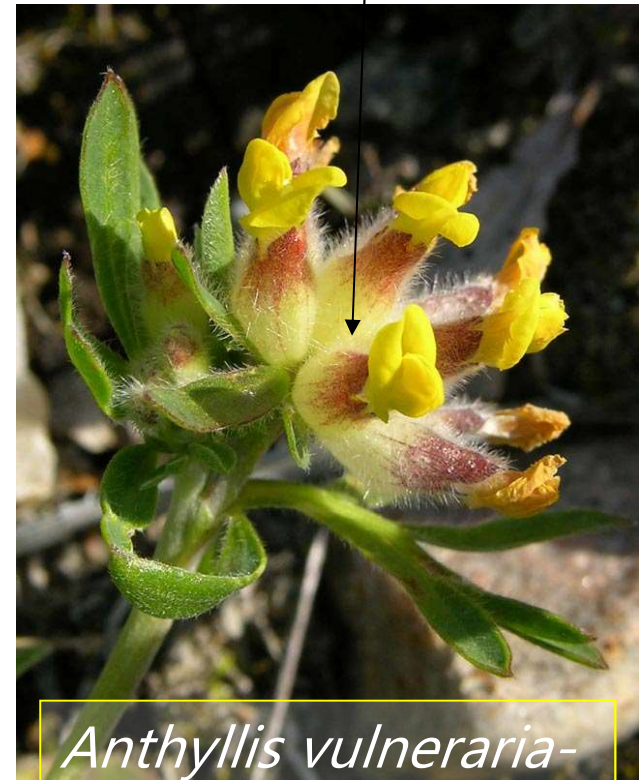
A (10)- filamenti svih prašnika srasli



*Spartium junceum*  
žuka



Naduvana čašica



*Anthyllis vulneraria*-  
ranjenik

A (10)- filamenti svih prašnika srasli



*Petteria ramentacea* - zanovjet

Prva opisana biljka u flori Crne Gore!!!

A (9) + 1- filamenti 9 prašnika srasli

*Robinia pseudoacacia*  
bagrem



*Wisteria sinensis*

*Phaseolus vulgaris*  
pasulj



*Pisum sativum*- grašak



Krupni zalisci

*Lathyrus cicera*



*Vicia grandiflora*







Latice sa dugim kincem



Colutea arborescens





Tipovi plodića kod *Medicago* sp.





*Glycine max*- soja



*Arachys hypogaea*- kikiriki



*Amorpha fruticosa*

Vijenac nije nalik na leptira!!!

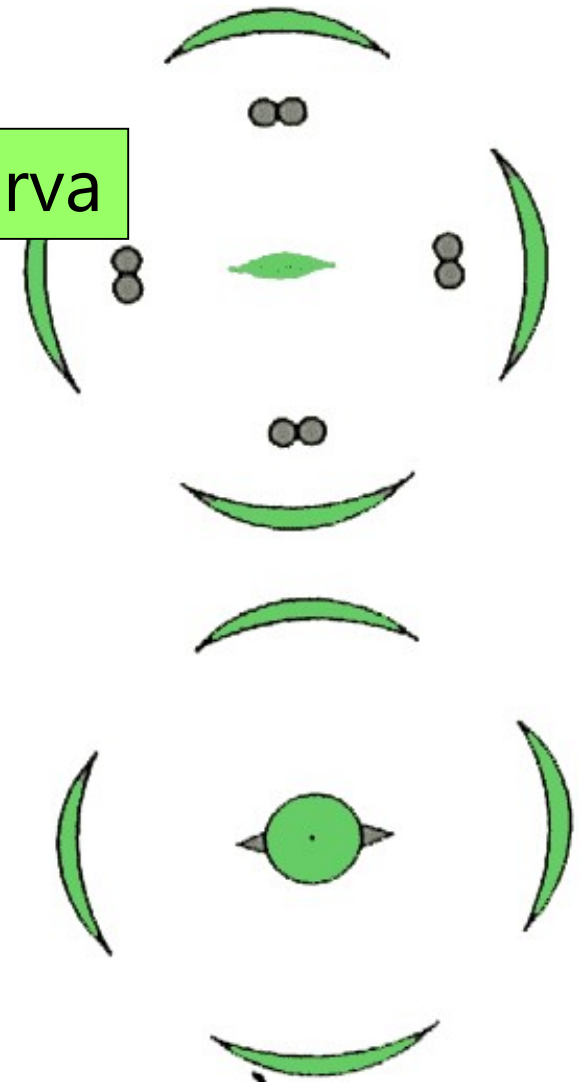
# Moraceae



Morus sp.- Murva

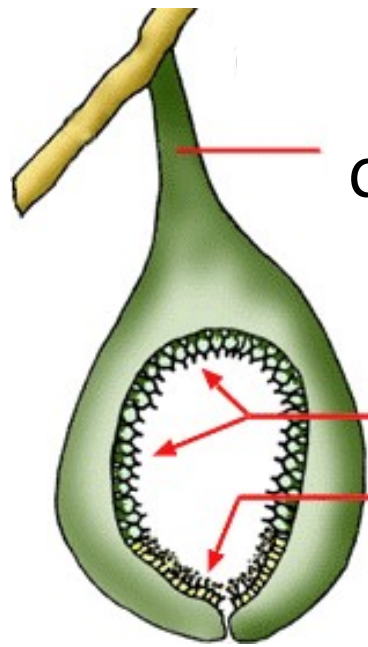


Muški cvjetovi



Ženski cvjetovi

# Ficus carica- SMOKVA



drška

ženski cvjetovi, \*P5 A5  
muški cvjetovi, P5 G(2)



Mliječni sok, *Ficus elastica*- kaučuk ...

# Rhamnaceae



\*K(4) C4 A4 G(2)

*Rhamnus orbicularis*



*Paliurus spina-christi- drača*

**\*K(5) C5 A5 G(2)**



*Frangula alnus*

**\*K(5) C5 A5 G(2)**





*Ziziphus jujuba-iglica*

